

Superior[®]Amenities

2024 PRODUCT CATALOG



Outdoor Furniture • Dog Park Equipment • Outdoor Fitness Equipment



Site Furnishings Ready For Your Community

We know that when a bench, table, or trash receptacle leaves us, it has to be ready to serve your community.

That's why at Superior Recreational Products we've built our company on hard work and the promise of providing you, our customer, with durable and reliable commercial outdoor furniture, dog park equipment, and fitness equipment at a great price. We combine quality materials and superior craftsmanship to provide you site furniture that's ready for whatever your community has in store.

What's Inside

- 06 Basic Table & Bench Collection
- 10 Essentials Table Collection
- 24 Essentials Bench Collection
- 34 Essentials Accessory Collection
- 40 Early Childhood Collection
- 42 Recycled Collection
- 46 Uptown Collection
- 56 All-Aluminum Bleacher Collection
- 58 Dog Park Collection
- 66 Fitness Collection



Our Bedrock, Your Benefits

-  Flagship offering made in America
-  Low maintenance & vandal-resistant
-  Quality without the high price
-  Exclusive textured polyethylene coating that is durable and easily repaired
-  Furniture, dog park equipment, and fitness equipment from one company

Helping You Say Goodbye to Bidding

We've teamed with strategic partners so you can bypass the bidding process. Visit srpsiteamenities.com/contracts to learn more.



Ordering Made Easy

Contact your local Superior sales representative to start the ordering process. They can answer any questions and provide product pricing and shipping information. Find your local representative at srpsiteamenities.com/find-a-rep.

New Products

NEW!
Walk Through
Accessible Table
PAGE 13




NEW!
Campfire
Grill
PAGE 38



Quick Ship

Your Order Shipped in 7-10 Business Days

We offer tables, benches, and trash receptacles that ship within 7-10 business days. Visit srpsiteamenities.com/products/quick-ship to learn more.

 Look for our icon throughout the catalog to see qualifying products.

Shopping Tools



Sketchfab

Select table, bench, and trash receptacle models are available on sketchfab.com.



CADdetails

Select table, bench, and trash receptacle models are available on [CADdetails.com](https://cadetails.com).



Space Planning Tool

See how many picnic tables will fit in an area by visiting srpsiteamenities.com/design-tools.



Color Applier

View products in 360° and choose your colors by visiting srpsiteamenities.com/design-tools.



Customization



Personalize Your Product

Most of our furnishings can be customized with logos, images, designs, and lettering. You can also incorporate a colored backing plate to enhance the visual impact of your design.



- Upcharge per customized piece
- Upcharge for powder coated backing plate
- Customization available on most products

Learn more at srpsiteamenities.com/customization

Video Library



Factory Tour

Take a tour of our manufacturing facility and meet the faces that bring your outdoor site furniture to life. Watch it at srpsiteamenities.com/about-us.



Product Videos

Learn details of our most popular benches, tables, and trash receptacles. Watch them on our YouTube channel: youtube.com/c/SuperiorRecreationalProducts

Our Other Product Lines



Superior *Shade*

Standard and custom shade structures for nearly every outdoor location. Learn more at srpshade.com.



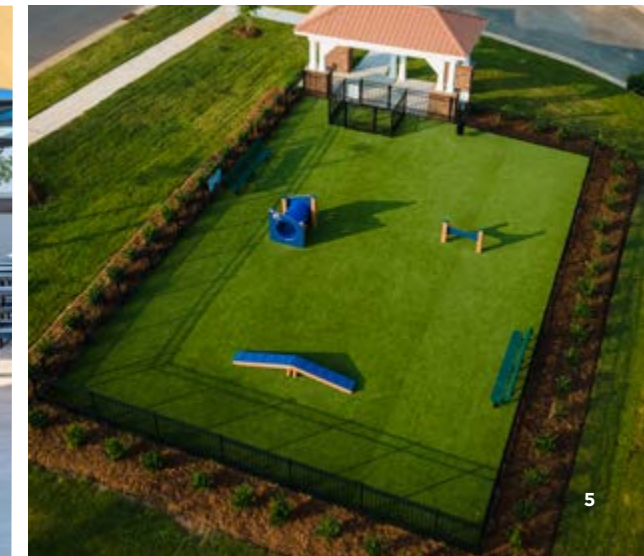
Superior *Shelter*

Durable steel shelters designed for use in a variety of outdoor settings. Learn more at srpshelter.com.



Superior *Playgrounds*

Commercial-grade playground structures and freestanding equipment. Learn more at srpplayground.com.





Basic Table & Bench COLLECTION

a practical line of thermoplastic coated tables, benches, and trash receptacles

07 Tables 08 Benches 09 Trash Receptacles

Qualifying Products Available for Quick Ship



Basic Rectangular Portable Table

SPECIFICATIONS

- 2 3/8" black powder coated frame
- Glossy, thermoplastic table top and seats available in blue, red, green, and black
- Pre-drilled surface mount holes
- Replace (#) with length desired

	PRODUCT NO.	LENGTHS (#)
UltraLeisure®	T#UL	6', 8'



Basic Accessible Rectangular Portable Table

SPECIFICATIONS

- 2 3/8" black powder coated frame
- 24" of overhang for ADA accessibility
- Glossy, thermoplastic table top and seats available in blue, red, green, and black
- Pre-drilled surface mount holes

	PRODUCT NO.	LENGTH
UltraLeisure®	T8ULHDCP	8'



Basic Square Portable Table

SPECIFICATIONS

- 1 5/8" (economy) black powder coated frame
- 46" square table top featuring standard umbrella hole
- Glossy, thermoplastic table top and seats available in blue, red, green, and black
- Pre-drilled surface mount holes

	PRODUCT NO.	SEATS
UltraLeisure®	T46UL	3, 4



Basic Accessible Square Portable Table

SPECIFICATIONS

- 1 5/8" (economy) black powder coated frame
- Glossy, thermoplastic table top and seats available in blue, red, green, and black
- Pre-drilled surface mount holes
- Extended 57" table top
- Features standard umbrella hole and 3 seats

	PRODUCT NO.
UltraLeisure®	T46UL-3ADA





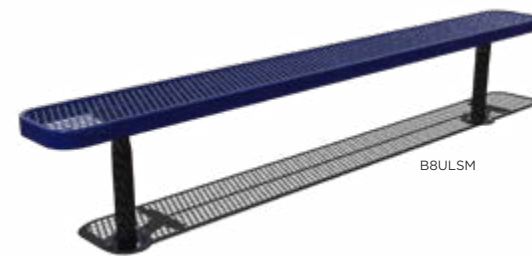
T46ULRACS

Basic Round Portable Table

SPECIFICATIONS

- 1 5/8" (economy) black powder coated frame
- 46" round table top featuring standard umbrella hole
- Glossy, thermoplastic table top and seats available in blue, red, green, and black
- Pre-drilled surface mount holes

	PRODUCT NO.	SEATS
UltraLeisure®  	T46ULRACS	3, 4



BBULSM

Basic Standard Bench without Back

SPECIFICATIONS

- 2 3/8" black powder coated frame
- Add P (portable), SM (surface mount), or S (in-ground mount) to end of product number
- Glossy, thermoplastic seat available in blue, red, green, and black
- 10" seat width and 17" seat height

	PRODUCT NO.	LENGTHS (#)
UltraLeisure®  	B#UL	6', 8'




B6WBULSM

Basic Standard Bench with Back

SPECIFICATIONS

- 2 3/8" black powder coated frame
- Add P (portable), SM (surface mount), or S (in-ground mount) to end of product number
- Glossy, thermoplastic back and seat available in blue, red, green, and black
- 10" seat width and 17" seat height

	PRODUCT NO.	LENGTHS (#)
UltraLeisure®  	B#WBUL	6', 8'



TR32UL


Basic Trash Receptacle 

SPECIFICATIONS

- 32 gallon capacity
- UltraLeisure® metal design
- Lid and liner sold separately
- Surface and in-ground mount options sold separately
- Glossy, thermoplastic coating
- Only available in black

PRODUCT NO.: TR32UL


Product Video Available
PAGE 4


View in 360° & Apply Colors
PAGE 2



Essentials Table COLLECTION

a traditional line of textured polyethylene coated tables suitable for every outdoor space

12 Portable 16 Pedestal 18 Web 20 4-4
21 Patio & Cafe 22 Shaded

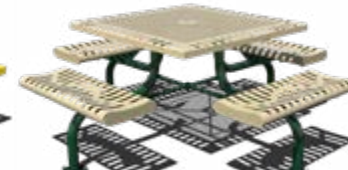
Essential Frame Styles



Portable



Pedestal



Web



4-4



Utility



Cafe

Essential Key Features



Signature Coating
Features our exclusive textured polyethylene coating that is durable and easily repaired.



Personalized Products
Add your logo, emblem, or design to market your brand and leave a visual impression.



Variety of Patterns
Available in a variety of metal pattern designs — all great for drainage and durability.



Child Sizes Available
Select products are available with a 14" seat height suitable for children.

See Before You Buy



Product Videos

Learn details of our most popular tables and see them up close before you buy. Watch them on our YouTube channel: youtube.com/c/SuperiorRecreationalProducts



Color Selection

Use our color applier tool to select and preview your color choice before you buy. Visit srpsiteamenities.com/design-tools/color-applier.



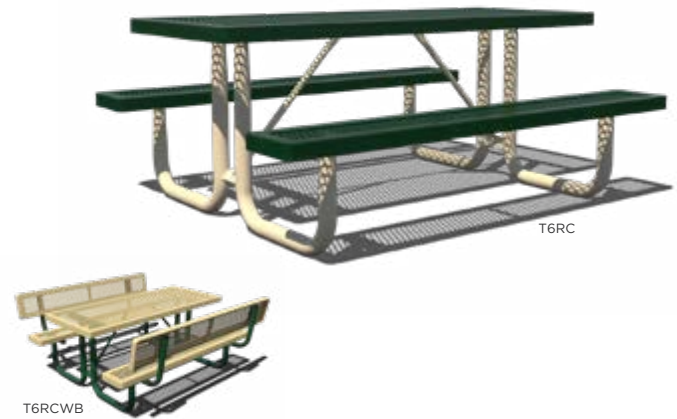


Rectangular Portable Table

SPECIFICATIONS

- 2 3/8" powder coated frame
- Pre-drilled surface mount holes
- Available with or without seat backs
- Where applicable, replace (#) with length desired

METAL DESIGN	PRODUCT NO.	LENGTHS (#)
STANDARD		
Regal	T#RC	4', 6', 8', 10'
Perforated	T#PERF	6', 8'
Innovated	T#INNV	4', 6', 8', 10'
Rolled	T#ROLL	6', 8'
STANDARD WITH SEAT BACKS		
Regal	T#RCWB	6', 8'

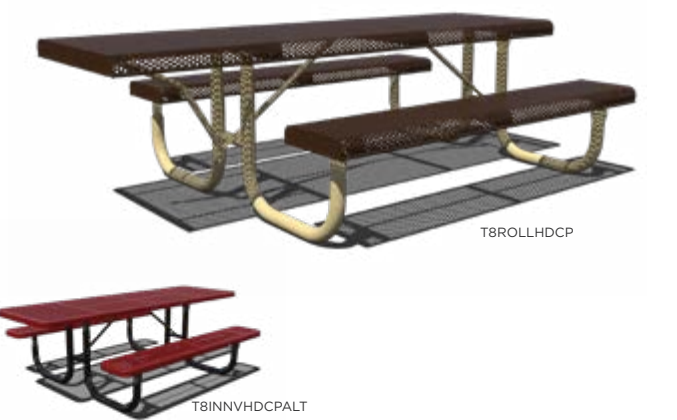


Accessible Rectangular Portable Table

SPECIFICATIONS

- 2 3/8" powder coated frame
- 24" of overhang for ADA accessibility
- Pre-drilled surface mount holes
- Available with standard or centered seats
- Includes anti-vandalism brace
- Where applicable, replace (#) with length desired

METAL DESIGN	PRODUCT NO.	LENGTHS (#)
STANDARD		
Regal	T#RCHDCP	6', 8'
Perforated	T#PERFHDCP	6', 8'
Innovated	T#INNVHDCP	6', 8'
Rolled	T8ROLLHDCP	8'
ACCESSIBLE WITH CENTERED SEATS		
Regal	T8RCHDCPALT	8'
Perforated	T8PERFHDCPALT	8'
Innovated	T8INNVHDCPALT	8'



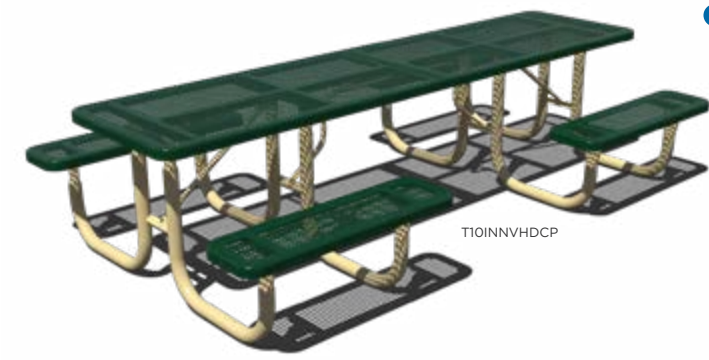
NEW!

Walk Through Accessible Rectangular Portable Table

SPECIFICATIONS

- 2 3/8" powder coated frame
- 2 points of ADA accessibility
- Pre-drilled surface mount holes
- Includes anti-vandalism brace

METAL DESIGN	PRODUCT NO.	LENGTH
Innovated	T10INNVHDCP	10'
Expanded Metal	T10HDCP	10'



Square Portable Table

SPECIFICATIONS

- 1 5/8" powder coated frame
- 46" square table top featuring standard umbrella hole
- Pre-drilled surface mount holes
- Available with or without seat backs

METAL DESIGN	PRODUCT NO.	SEATS
WITHOUT SEAT BACKS		
Regal	T46RC	3, 4
Perforated	T46PERF	3, 4
Classic	T46CLASS	3, 4
WITH SEAT BACKS		
Regal	T46RCWB	4



Product Video Available
PAGE 4

Your Logo
Personalize Your Product
PAGE 4

Metal Design Options
PAGE 70

Child Sized Tables Available
PAGE 40

360° View in 360° & Apply Colors
PAGE 2



T46CLASS-3ADA

Accessible Square Portable Table

SPECIFICATIONS

- 1 1/8" powder coated frame
- Pre-drilled surface mount holes
- Extended 57" table top
- Features standard umbrella hole
- Features 3 seats

METAL DESIGN	PRODUCT NO.
Regal	T46RC-3ADA
Classic	T46CLASS-3ADA



T46INNV-3ADA

Accessible Octagon Portable Table

SPECIFICATIONS

- 1 1/8" powder coated frame
- Pre-drilled surface mount holes
- Extended 57" table top
- Features standard umbrella hole
- Features 3 seats

METAL DESIGN	PRODUCT NO.
Regal	T46OCT-3ADA
Rolled	T46OCTROLL-3ADA
Innovated	T46INNV-3ADA



T46OCTROLL

Octagon Portable Table

SPECIFICATIONS

- 1 1/8" powder coated frame
- 46" octagon table top featuring standard umbrella hole
- Pre-drilled surface mount holes
- Available with or without seat backs

METAL DESIGN	PRODUCT NO.	SEATS
STANDARD		
Regal	T46OCT	3, 4
Perforated	T46OCTPERF	3, 4
Rolled	T46OCTROLL	3, 4
Innovated	T46INNV	3, 4
STANDARD WITH SEAT BACKS		
Regal	T46OCTWB	4



T46OCTWB




T46RACS

Round Portable Table

SPECIFICATIONS

- 1 1/8" powder coated frame
- 46" round table top featuring standard umbrella hole
- Pre-drilled surface mount holes
- Available with standard or solid top

METAL DESIGN	PRODUCT NO.	SEATS
STANDARD TOP		
Regal 	T46RACS	3, 4
Innovated	T46RACSINNV	3, 4
SOLID TOP		
Regal	TS46RACS	3, 4



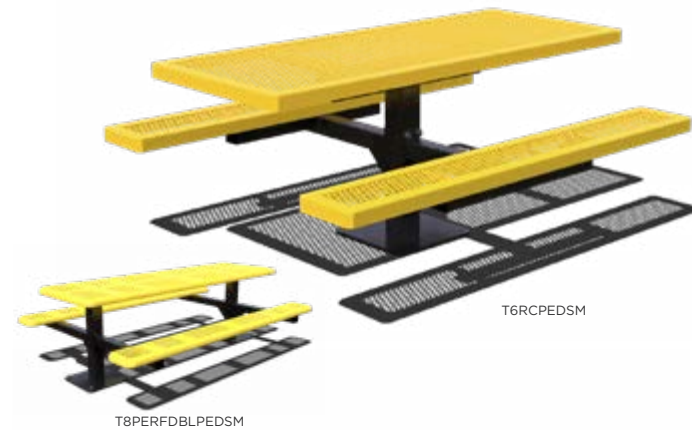
TS46RACS

Your Logo
Personalize Your Product
PAGE 4

Metal Design Options
PAGE 70

Child Sized Tables Available
PAGE 40

360° View in 360° & Apply Colors
PAGE 2



Rectangular Pedestal Table

SPECIFICATIONS

- Heavy-duty 4" square powder coated frame
- 8' version features double pedestal frame
- Add SM (surface mount) or S (in-ground mount) to end of product number
- Select metal design styles accessible by design

METAL DESIGN	6' LENGTH	8' LENGTH
Regal	T6RCPED	T8RCDBLPED
Perforated	T6PERFPED	T8PERFDBLPED
Innovated	T6INNVPED	T8INNVDLPED
Rolled	T6ROLLPED	

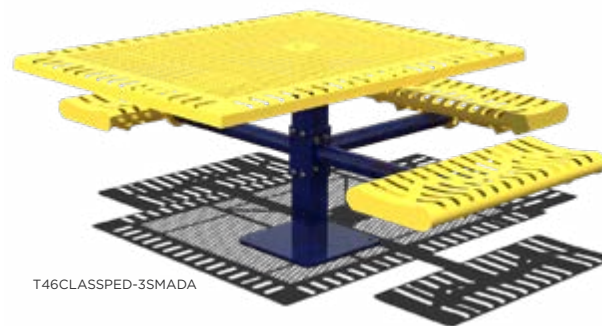


Accessible Rectangular Pedestal Table

SPECIFICATIONS

- Heavy-duty 4" square powder coated frame
- 8' version features double pedestal frame
- 24" of overhang for ADA accessibility
- Add SM (surface mount) or S (in-ground mount) to end of product number

METAL DESIGN	6' LENGTH	8' LENGTH
Regal	T6RCPEDHDCP	T8RCDBLPEDHDCP

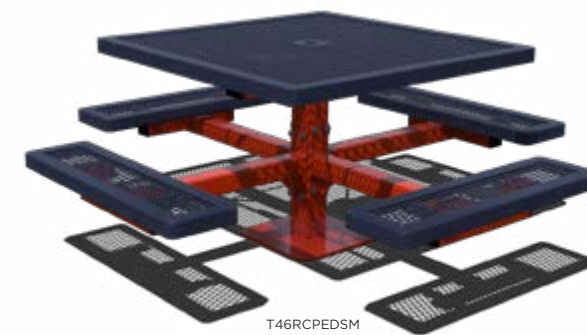


Accessible Square Pedestal Table

SPECIFICATIONS

- Heavy-duty 4" square powder coated frame
- Extended 57" table top featuring standard umbrella hole
- Portable (POR), surface (SM), or in-ground mount (S)

METAL DESIGN	PRODUCT NO.
Regal	T46RCPED-3#ADA
Classic	T46CLASSPED-3#ADA



Square Pedestal Table

SPECIFICATIONS

- Heavy-duty 4" square powder coated frame
- Perforated option features 2 7/8" round support arms
- 46" square table top featuring standard umbrella hole
- Portable (POR), surface (SM), or in-ground mount (S)

METAL DESIGN	PRODUCT NO.	SEATS
Regal	T46RCPED	3, 4
Perforated	T46PERFPED	3, 4
Classic	T46CLASSPED	3, 4

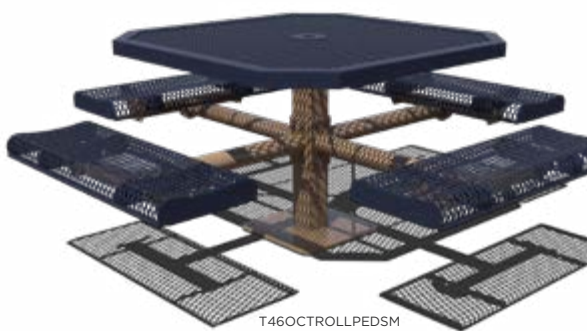


Round Pedestal Table

SPECIFICATIONS

- Heavy-duty 4" square frame with 2 7/8" round support arms
- 46" round table top featuring standard umbrella hole
- Surface (SM) or in-ground mount (S)

METAL DESIGN	PRODUCT NO.	SEATS
Expanded Metal	T46RACSPED	3, 4



Octagon Pedestal Table

SPECIFICATIONS

- Heavy-duty 4" square frame with 2 7/8" round support arms
- 46" octagon table top featuring standard umbrella hole
- Surface (SM) or in-ground mount (S)

METAL DESIGN	PRODUCT NO.	SEATS
Innovated	T46INNVPED	2, 3, 4
Rolled	T46OCTROLLPED	2, 3, 4



T46OCTROLLPED-3SMADA

Accessible Octagon Pedestal Table

SPECIFICATIONS

- Heavy-duty 4" square frame with 2 7/8" round support arms
- 46" octagon table top featuring standard umbrella hole
- Replace (#) in product number with SM (surface mount) or S (in-ground mount)
- Features 3 seats

METAL DESIGN	PRODUCT NO.
Innovated	T46INNVPED-3#ADA
Rolled	T46OCTROLLPED-3#ADA



T46WEBCLASSSM

Square Web Table

SPECIFICATIONS

- 2 3/8" powder coated frame
- 46" square table top featuring standard umbrella hole
- Surface (SM) or in-ground mount (S)

METAL DESIGN	PRODUCT NO.	SEATS
Regal	T46WEB	3, 4
Classic	T46WEBCLASS	3, 4



T46WEBCLASS-3SMADA

Accessible Square Web Table

SPECIFICATIONS

- 2 3/8" powder coated frame
- Extended 57" square table top featuring standard umbrella hole
- Features 3 seats
- Replace (#) in product number with SM (surface mount) or S (in-ground mount)

METAL DESIGN	PRODUCT NO.
Regal	T46WEB-3#ADA
Classic	T46WEBCLASS-3#ADA



T46WEBOCTPSM

Octagon Web Table

SPECIFICATIONS

- 2 3/8" powder coated frame
- 46" octagon table top featuring standard umbrella hole
- Portable/surface (PSM) or in-ground mount (S)

METAL DESIGN	PRODUCT NO.	SEATS
Regal	T46WEBOCT	3, 4



T46WEBOCT-3SMADA

Accessible Octagon Web Table

SPECIFICATIONS

- 2 3/8" powder coated frame
- Extended 57" octagon table top featuring standard umbrella hole
- 3 seats
- Replace (#) in product number with SM (surface mount) or S (in-ground mount)

PRODUCT NO.: T46WEBOCT-3#ADA



T46WEBRACSS

Round Web Table

SPECIFICATIONS

- 2 3/8" powder coated frame
- 46" round table top featuring standard umbrella hole
- Portable/surface (PSM) or in-ground mount (S)

METAL DESIGN	PRODUCT NO.	SEATS
Regal	T46WEBRACS	3, 4

Product Video Available
PAGE 4

Personalize Your Product
PAGE 4

Metal Design Options
PAGE 70

Mounting Accessories
PAGE 23

View in 360° & Apply Colors
PAGE 2



T6RC4-4SM

4-4 Table

SPECIFICATIONS

- Heavy-duty 4" square powder coated frame
- Detached seating
- Add SM (surface mount) or S (in-ground mount) to end of product number

METAL DESIGN	PRODUCT NO.	LENGTHS (#)
Regal	T#RC4-4	6', 8'
Perforated	T#PERF4-4	6', 8'
Innovated	T#INNV4-4	6', 8'
Rolled	T6ROLL4-4	6'



T6RCHDCP4-4SM

♿ Accessible 4-4 Table

SPECIFICATIONS

- Heavy-duty 4" square powder coated frame
- Detached seating
- 24" of overhang for ADA accessibility
- Add SM (surface mount) or S (in-ground mount) to end of product number

METAL DESIGN	PRODUCT NO.	LENGTHS (#)
Regal	T#RCHDCP4-4	6', 8'
Perforated	T8PERFHDCP4-4	8'
Innovated	T8INNVHDCP4-4	8'
Rolled	T6ROLLHDCP4-4	6'



T6UP

Rectangular Portable Utility Table

SPECIFICATIONS

- 2 3/8" powder coated frame
- Pre-drilled surface mount holes available for additional charge

METAL DESIGN	PRODUCT NO.	LENGTHS (#)
Regal	T#UP	4', 6', 8', 10'



T36ROUND

Round Portable Cafe Table

SPECIFICATIONS

- 1 5/8" powder coated frame
- Features standard umbrella hole
- Features expanded metal table top design
- 36" or 46" top diameter options

PRODUCT NO.	TOP DIAMETER
T##ROUND	36", 46"



T36CAFESM

Bar Height Pedestal Cafe Table

SPECIFICATIONS

- 2 3/8" powder coated frame
 - 42" table height and 36" top diameter
 - Features expanded metal table top design
 - Add SM (surface mount) or S (in-ground mount) to end of product number
- PRODUCT NO.: T36CAFE





T42PEDBAR

Bar Height Pedestal Table with Attached Seats

SPECIFICATIONS

- 2 3/8" powder coated frame
- Features standard umbrella hole
- 42" table height and 46" top diameter
- Features expanded metal table top and seat design
- Pre-drilled holes for optional surface mounting

PRODUCT NO.: T42PEDBAR




T42RASS

Round Portable Cafe Table with Attached Seats

SPECIFICATIONS

- 2 3/8" powder coated frame
- 46" top diameter
- Available with 3 or 4 seats
- For 3 seats, add -3 to end of product number
- Pre-drilled holes for optional surface mounting

METAL DESIGN	PRODUCT NO.	SEATS
Expanded Metal 	T42RASS	3, 4
Innovated	T42RASSINNV	3, 4



Shaded Table

SPECIFICATIONS

- 6' Regal table with 8' seats and 12.5' x 8' shade
- Includes Glide Elbow, a fabric release mechanism
- Only available as in-ground mount

PRODUCT NO.: TRU120808IG

Table Accessories



Market Umbrella

- 7.5' DIAMETER | 7.5UMB-MRKT-FG
- 9' DIAMETER | 9.0UMB-MRKT-FG
- Available in two diameters
- Features heavy gauge pulley system
- Features fiberglass frame
- Marine-grade acrylic fabric
- Multiple color options available



Patio Umbrella

- STEEL FRAME | 7.5UMB-PATIO-ST
- FIBERGLASS FRAME | 7.5UMB-PATIO-FG
- Available in 7.5' diameter
- Choice of steel or fiberglass frame
- Features crank lift with tilt frame
- Multiple color options available



Mounting Cover Set

- SMALL_SURF_CVR_SET
- 2 3/8" diameter
- Hides mounting plates
- Sold as a set of two
- Two-piece design for ease of installation
- Powder coat finish



In-Ground Post Set

- INGRDPOST-PC
- Allows for portable tables to be in-ground mounted
- Sold as a set of two
- Powder coat finish



Surface Mount Clamp Set

- CLAMP-SET
- Allows for portable tables to be surface mounted
- Sold as a set of two
- Galvanized finish

Umbrella Stand

- WHITE | UMB-BASE-WH
- BLACK | UMB-BASE-BK
- 16" diameter
- Filled with concrete



Umbrella Anchor

- UBRACE
- All-aluminum
- Attaches under table to secure umbrella and prevent umbrella from flying away



Sleep Inhibitor for Seats

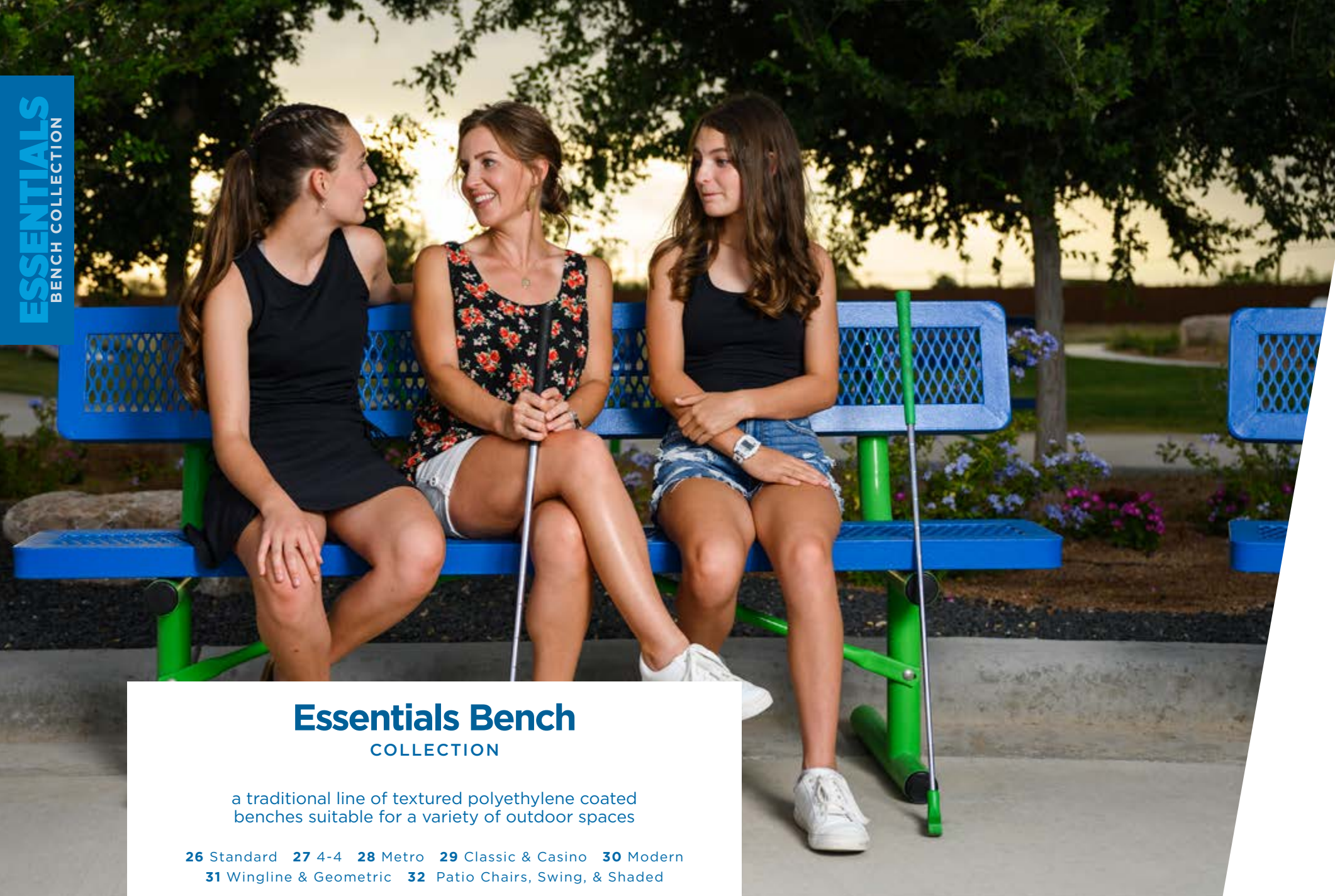
- SLEEPSEAT
- Inhibits sleeping on table or bench seats
- Attaches to middle of seat



Table Shade

- 6' TABLE | STS765IG OR STS765SM
- 8' TABLE | STS785IG OR STS785SM
- Available widths for 6' or 8' table designs
- In-ground (IG) or surface (SM) mounting
- Features commercial-grade fabric and powder coat frame





Essentials Bench COLLECTION

a traditional line of textured polyethylene coated benches suitable for a variety of outdoor spaces

26 Standard 27 4-4 28 Metro 29 Classic & Casino 30 Modern
31 Wingline & Geometric 32 Patio Chairs, Swing, & Shaded

Our Essential Frame Styles



Standard



4-4



Metro



Classic



Casino



Modern



Wingline

Essential Key Features



Signature Coating
Features our exclusive textured polyethylene coating that is durable and easily repaired.



Personalized Products
Add your logo, emblem, or design to market your brand and leave a visual impression.



Variety of Patterns
Available in a variety of metal pattern designs — all great for drainage and durability.



Child Sizes Available
Select products are available with a 14" seat height suitable for children.

See Before You Buy



Product Videos

Learn details of our most popular benches and see them up close before you buy. Watch them on our YouTube channel: youtube.com/c/SuperiorRecreationalProducts





Standard Bench with Back

SPECIFICATIONS

- 2 3/8" powder coated frame
- Add P (portable), SM (surface mount), or S (in-ground mount) to end of product number
- 10' and 15' lengths consist of two smaller sections bolted together
- 10" seat width and 17" seat height

METAL DESIGN	PRODUCT NO.	LENGTHS (#)
Regal	B#WBRC	4', 6', 8', 10', 15'
Perforated	B#WBPERF	6', 8'
Innovated	B#WBINNV	4', 6', 8', 10', 15'
Rolled	B#WBROLL	6', 8'

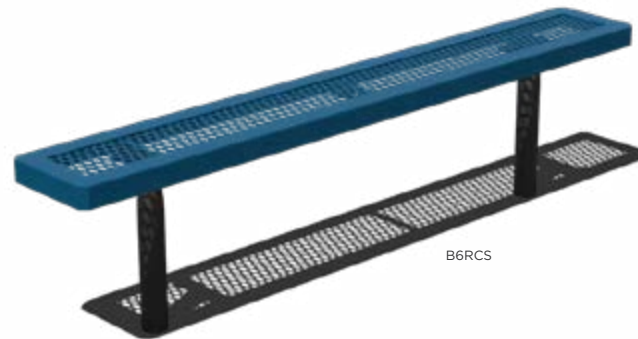


Standard Bench without Back

SPECIFICATIONS

- 2 3/8" powder coated frame
- Add P (portable), SM (surface mount), or S (in-ground mount) to end of product number
- 10' and 15' lengths consist of two smaller sections bolted together
- 10" seat width and 17" seat height

METAL DESIGN	PRODUCT NO.	LENGTHS (#)
Regal	B#RC	4', 6', 8', 10', 15'
Perforated	B#PERF	6', 8'
Innovated	B#INNV	6', 8', 10', 15'
Rolled	B#ROLL	6', 8'



Standard Bench without Back with Deluxe Seats

SPECIFICATIONS

- 2 3/8" powder coated frame
- Add P (portable), SM (surface mount), or S (in-ground mount) to end of product number
- 10' and 15' lengths consist of two smaller sections bolted together
- 15" seat width and 17" seat height

METAL DESIGN	PRODUCT NO.	LENGTHS
Regal	B#PLAYERRC	4', 6', 8', 10', 15'
Innovated	B#PLAYERINNV	4', 6', 8', 10', 15'



4-4 Bench

SPECIFICATIONS

- Heavy-duty 4" square powder coated frame
- Add SM (surface mount) or S (in-ground mount) to end of product number
- 10" seat width and 17" seat height

METAL DESIGN	PRODUCT NO.	LENGTHS (#)
Regal	B#WBRC4-4	6', 8'
Perforated	B#WBPERF4-4	6', 8'
Innovated	B#WBINNV4-4	6', 8'

Product Video Available
PAGE 4

Personalize Your Product
PAGE 4

Metal Design Options
PAGE 70

Child Sized Tables Available
PAGE 40

View in 360° & Apply Colors
PAGE 2



B6WBPERFD4-4SM

Double 4-4 Bench

SPECIFICATIONS

- Double-sided bench
- Heavy-duty 4" square powder coated frame
- Add SM (surface mount) or S (in-ground mount) to end of product number
- 10" seat width and 17" seat height

METAL DESIGN	PRODUCT NO.	LENGTHS (#)
Regal	B#WBRCD4-4	6', 8'
Perforated	B#WBPERFD4-4	6', 8'
Innovated	B#WBINNVD4-4	6', 8'



B6WBCLASSIC

Portable Classic Bench & Add-On

SPECIFICATIONS

- Cast aluminum, powder coated frame
- Portable with pre-drilled holes for optional surface mounting
- Contoured back
- Add-on bench sections available
- 16 1/2" seat height
- Classic wave design

VERSION	PRODUCT NO.	LENGTHS (#)
Standard	B#WBCLASSIC	4', 5', 6'
Add-On	B#WBCLASSIC-ADDON	4', 5', 6'



B6WBMETRO

Metro Bench

SPECIFICATIONS

- 7 gauge steel seat with 3/4" steel plate legs
- Solid, one-piece design
- Requires no assembly or hardware
- Portable with pre-drilled holes for optional surface mounting
- Fully textured polyethylene coated

PRODUCT NO.	LENGTHS (#)
B#WBMETRO	4', 6'



B6WBHORZCASINO



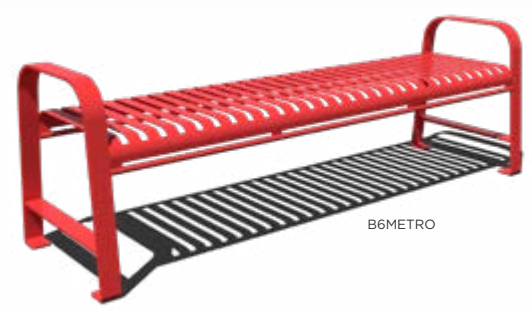
B6WBMODCASINO

Portable Casino Bench with Back

SPECIFICATIONS

- 1 1/2" square textured polyethylene legs and arms
- Portable with pre-drilled holes for optional surface mounting
- Contoured back
- Optional custom center armrest
- 15 1/2" seat height

METAL DESIGN	PRODUCT NO.	LENGTHS (#)
Modern	B#WBMODCASINO	4', 6'
Horizontal Strap	B6WBHORZCASINO	6'



B6METRO

Metro Bench without Back

SPECIFICATIONS

- 7 gauge steel seat with 3/4" steel plate legs
- Solid, one-piece design
- Requires no assembly or hardware
- Portable with pre-drilled holes for optional surface mounting
- Fully textured polyethylene coated

PRODUCT NO.	LENGTHS (#)
B#METRO	4', 6'

Product Video Available
PAGE 4

Your Logo
Personalize Your Product
PAGE 4

Metal Design Options
PAGE 70

View in 360° & Apply Colors
PAGE 2

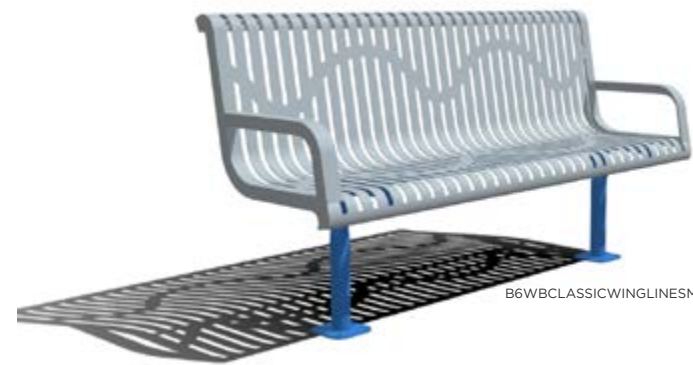


Modern Bench with Back & Add-On

SPECIFICATIONS

- Heavy-duty 2 3/8" powder coated frame
- Add PSM (portable/surface mount) or S (in-ground mount) to end of product number or before (-) for add-on
- Contoured back with armrests
- Add-on bench sections available
- Seat height is 18"

METAL DESIGN	VERSION	PRODUCT NO.	LENGTHS (#)
Standard	Standard	B#WBMODERN 360°	4', 6'
	Add-On	B#WBMODERN-ADDON	4', 6'
Classic	Standard	B#WBMODCLASS	4', 6'
	Add-On	B#WBMODCLASSIC-AD	4', 6'



Wingline Bench

SPECIFICATIONS

- Heavy-duty 2 3/8" powder coated frame
- Add P (portable), SM (surface mount), or S (in-ground mount) to end of product number
- Contoured back with armrests
- Seat height is 18"

METAL DESIGN	PRODUCT NO.	LENGTHS (#)
Classic 360°	B#WBCLASSICWINGLINE	4', 6'
Standard	B#WBWINGLINE	4', 6'



Modern Bench without Back & Add-On

SPECIFICATIONS

- Heavy-duty 2 3/8" powder coated frame
- Add PSM (portable/surface mount) or S (in-ground mount) to end of product number or before (-) for add-on
- Add-on bench sections available
- Seat height is 18"

METAL DESIGN	VERSION	PRODUCT NO.	LENGTHS (#)
Standard	Standard	B#MODERN	4', 6'
	Add-On	B#MODERN-ADDON	4', 6'
Classic	Standard	B#MODCLASS	4', 6'
	Add-On	B#MODCLASSIC-ADDON	4', 6'



Geometric Bench

SPECIFICATIONS

- Heavy-duty 4" powder coated frame
- 3/4" #9 expanded metal
- Add SM (surface mount), or S (in-ground mount) to end of product number
- 20" seat width with 4" tall outside border

PRODUCT NO.	LENGTH (##)
GBS##	72", 96"

Mounting Accessories
PAGE 33

Your Logo
Personalize Your Product
PAGE 4

Metal Design Options
PAGE 70

360°
View in 360° & Apply Colors
PAGE 2



Stacking Patio Chair

SPECIFICATIONS

- 3/4" #9 expanded metal
- 18" seat height
- Stackable and portable
- Available with or without armrests
- Contoured two-piece seat/seat back design
- Pairs with Portable Utility and Cafe Tables

PRODUCT NO.: CSTACK



Barstool

SPECIFICATIONS

- 3/4" #9 expanded metal contour seat
- 30" seat height and 18" seat width
- Portable
- Pairs with Bar Height Pedestal Cafe Table (T36CAFE)

PRODUCT NO.: BARSTOOL



B4WBMODSWING

Bench Swing

SPECIFICATIONS

- Heavy-duty 2 3/8" powder coated frame
- 3/4" #9 expanded metal
- Includes uncoated galvanized swing chain
- In-ground mount
- Contoured back with armrests

PRODUCT NO.	LENGTHS (#)
B#WBMODSWING	4', 6'

Shaded Bench

SPECIFICATIONS

- 8' Regal bench with 12.5' x 8' shade
- Includes Glide Elbow™ fabric release mechanism
- Only available as in-ground mount

PRODUCT NO.: BRU120808IG



Bench Accessories



Mounting Cover Set

SMALL_SURF_CVR_SET

- 2 3/8" diameter
- Hides mounting plates
- Sold as a set of two
- Two-piece design for ease of installation
- Powder coat finish



Sleep Inhibitor for Seats

SLEEPSEAT

- Inhibits sleeping on table or bench seats
- Attaches to middle of seat



Integrated Bench Shade

STS765BA

- Attaches to Standard Benches with Backs
- Available only for benches that are in-ground or surface mount
- Features commercial-grade fabric and black powder coat frame



Freestanding Bench Shade

6' BENCH | STS765IG OR STS765SM

8' BENCH | STS785IG OR STS785SM

- Available widths for 6' or 8' bench designs
- In-ground (IG) or surface (SM) mounting
- Features commercial-grade fabric and powder coat frame



Essentials Site Accessories

COLLECTION

a traditionally designed line of essential site accessories

35 Bike Racks **36** Trash Receptacles
38 Planter and Grills **39** Bollards & Solar Amenities

Qualifying Products Available for Quick Ship



Cyclist Bike Rack
Accommodates 2 bikes
PRODUCT NO.: CYCLIST



Slope Bike Rack
Accommodates 2 bikes
PRODUCT NO.: SLOPE



Horse Shoe Bike Rack
Accommodates 2 bikes
PRODUCT NO.: HORSESHOE



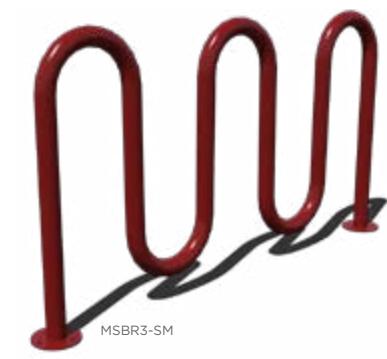
Ring Bike Bollard
Accommodates 2 bikes
PRODUCT NO.: RINGBOLLARD



Bike Loop Rack
Accommodates 2 bikes
PRODUCT NO.: T-BIKELOOP



Post Bike Bollard
Accommodates 2 bikes
PRODUCT NO.: BIKEPOST



Wave Bike Rack
Options for 5, 7, 11, or 13 bikes

BIKE COUNT	WAVE COUNT	PRODUCT NO.
5	2	MSBR2
7	3	MSBR3
11	5	MSBR5
13	6	MSBR6

Mounting
Surface Mount (-SM)
In-Ground Mount (-ING)

Finish
Powder Coated Finish





Standard Trash Receptacle

- SPECIFICATIONS**
- 32 and 55 gallon options available
 - Lid and liner sold separately

METAL DESIGN	PRODUCT NO.	CAPACITY
Regal TR##		32, 55
Perforated TR32PERF		32
Classic TR32CLASSIC		32



Vertical Strap Trash Receptacle

- SPECIFICATIONS**
- 32 gallon
 - Vertical ribbed steel design
 - Lid included
 - Liner sold separately
 - Powder coated finish

PRODUCT NO.: TR32SLAT



Tapered Trash Receptacle

- SPECIFICATIONS**
- 32 gallon
 - Expanded metal design
 - Lid and liner sold separately

PRODUCT NO.: TR32TAPER



Crown Trash Receptacle

- SPECIFICATIONS**
- 36 gallon
 - Vertical ribbed steel design with flared top
 - Flat top lid and liner included

PRODUCT NO.: TR32CROWN



Horizontal Strap Trash Receptacle

- SPECIFICATIONS**
- 32 gallon
 - Horizontal ribbed steel design
 - Lid and liner sold separately

PRODUCT NO.: TR32HORZ



Metro Trash Receptacle

- SPECIFICATIONS**
- 36 gallon
 - Vertical ribbed steel design with flared top
 - Hinged side door for easy liner removal
 - Flat top lid and liner sold separately

PRODUCT NO.: TR32METRO

Easy Access Hinged Door

Product Video Available
PAGE 4

Mounting Options Sold Separately
PAGE 37

Your Logo
Personalize Your Product
PAGE 4

Metal Design Options
PAGE 70

View in 360° & Apply Colors
PAGE 2

Trash Receptacle Accessories



Plastic Dome Top

- DOME32-#
- Fits 32 gallon receptacles
 - Available in black
 - Made from heavy-duty plastic
 - Cable attachment sold separately
 - Features self-closing door to trap odor and deflect rain, debris, and pests



Steel Dome Top

- DOME32S
- Fits 32 gallon receptacles
 - Textured polyethylene finish
 - Cable attachment sold separately
 - Features galvanized, self-closing door to trap odor and deflect rain, debris, and pests



Flat Top

- Fits 32 and 55 gallon receptacles
- 8" and 14" top opening available
- Textured polyethylene finish

GALLON	OPENING	PRODUCT NO.
32	8"	FLATTOP32
32	14"	FLATTOP32-14
55	8"	FLATTOP55



Flat Top with Rain Bonnet

- FLATTOPRB32-HW
- Fits 32 gallon receptacles
 - Textured polyethylene finish
 - 8" standard diameter opening (shown); 14" also available
 - Features bonnet to deflect rain and debris



Flat Top with Ash Bonnet

- FLATTOPAB32-HW
- Fits 32 gallon receptacles
 - Textured polyethylene finish
 - 8" standard diameter opening (shown); 14" also available
 - Features sand tray for ashes

Plastic Liner

- 32 GALLON | LINER32
55 GALLON | LINER55
- 55 gallon option available in gray
 - 32 gallon option available in black
 - Made from heavy-duty plastic



Cable Attachment

- CABLE
- Order with trash receptacle top to keep top secured to trash receptacle
 - 18" long
 - Made from 3/32" diameter braided cable



Surface Mounting Kit

- TR-SM-HW
- Includes hardware
 - Powder coated



In-Ground Mounting Kit

- TR-ING-HW
- Includes hardware
 - Powder coated





Planter

- SPECIFICATIONS**
- 24" wide x 18" high
 - Expanded metal design
 - Liner (Product No. 01-05-0212) sold separately
 - Portable and/or surface mount
 - Textured polyethylene coated
- PRODUCT NO.: PLANTER-24IN



Rotating Grill

- SPECIFICATIONS**
- 20" wide x 15" deep x 10" high firebox
 - 300 square inches of cooking space
 - Rotates 360°
 - 4-level adjustable cooking grate has cooling coil handles
 - Durable rust resistant, high temp, black powder coated firebox
 - Galvanized, in-ground mount post
- PRODUCT NO.: GPS20



NEW!
Campfire Grill

- SPECIFICATIONS**
- 28" wide x 39" deep x 8" high firebox
 - 532 square inches of cooking space per grill (1064 sq. in. total)
 - Cooling coil handles
 - Durable rust resistant, high temp, black powder coated firebox
 - In-ground or surface mounting (-SM) available
- PRODUCT NO.: GPS27D



Safety Bollard

- SPECIFICATIONS**
- 8" diameter and 48" height
 - Powder coated finish
 - Add SM (surface mount) or S (in-ground mount) to end of product number

DESIGN	PRODUCT NO.
Standard	BOLLARD8
Zion	BOLLARD8Z



Solar Charging Pole

- SPECIFICATIONS**
- 30" round table
 - Reflective lettering
 - 4 dual 3.0 rapid-charge USB ports
 - Dedicated mobility device access port
 - 1-year limited warranty
 - Care kit (extra fuse, touch-up paint, and security screw bit)
- PRODUCT NO.: SOLARCHARGPOLE



Solar Bench

- SPECIFICATIONS**
- 6' Horizontal Slat Casino Bench Base
 - 2 Dual 2.0 Rapid-Charge USB ports
 - 1-year limited warranty
 - Care kit (extra fuse, touch-up paint, and security screw bit)
- PRODUCT NO.: SOLARCHARGBENCH

Shaded Solar Bench

- SPECIFICATIONS**
- Perforated with textured polyethylene canopy and bench
 - Powder coated frame
 - Surface mount
 - 60-Watt polycrystalline solar panel
 - 2 dual 3.0 rapid-charge USB ports
 - Wet and over-temperature protection
- PRODUCT NO.: SOLARBENCHSHADE





Early Childhood COLLECTION

Child-Sized Benches & Tables



14" High Seats

Portable Children's Bench

- 14" seat height
- Available for Standard With and Without Back Benches
- Add "-ELEM" to end of qualifying product number



14" High Seats

Portable Children's Table

- 14" seat height
- Available for Standard Rectangular, Square, Octagon, or Round Portable Tables
- Add "-ELEM" to end of qualifying product number

Buddy Benches

Our Buddy Benches are an industry favorite — and for a good reason. Buddy Benches are an ideal solution to combat loneliness and help foster friendships anywhere you can put them.

Bench Options

Bench options include most benches from our Essentials Bench Collection.



Design Options

Choose from our standard designs below and opt for a colored backing plate for a small upcharge.

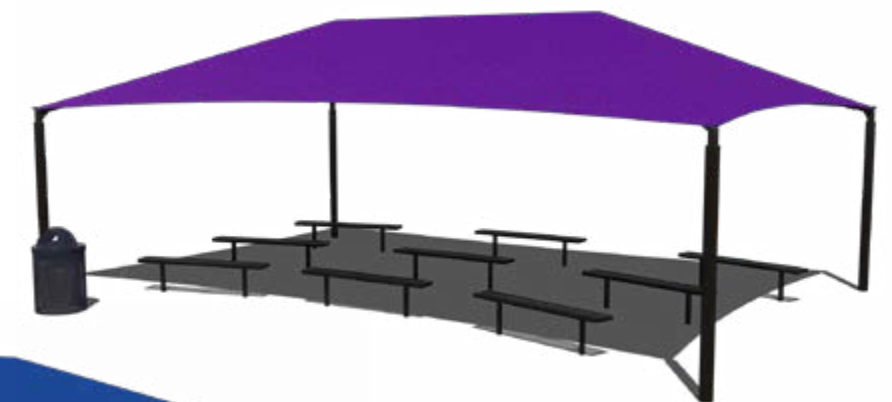
BUDDY BENCH Standard



Outdoor Classrooms

Outdoor Classroom with Benches

- 30' x 20' Hip Shade
- 6' Basic UltraLeisure® Standard Bench without Back, 9 Quantity
- 32 Gallon Regal Standard Trash Receptacle



Outdoor Classroom with Tables

- 30' x 20' Hip Shade
- 6' Basic UltraLeisure® Rectangular Portable Table, 6 Quantity
- 32 Gallon Regal Standard Trash Receptacle

Product Video
Available
PAGE 4



Recycled COLLECTION

a collection of benches, tables, and trash receptacles
made from eco-friendly material

43 Benches 44 Tables 45 Receptacles



PB6BFCONING

Contour Bench

SPECIFICATIONS

- 6' or 8' length
- Cedar or gray 2" x 4" Resinwood slats
- Heavy duty, powder coated steel frames
- Stainless steel hardware
- In-ground or surface mount frame
- Add (ING) at end of product number for in-ground mount

PRODUCT NO.	LENGTHS (#)
PB#BFCON	6', 8'



PB6CPAE

Comfort Park Avenue Bench

SPECIFICATIONS

- 6' or 8' length
- Cedar or gray 2" x 4" Resinwood slats
- Black recycled plastic base
- Stainless steel hardware
- Surface mount frame

PRODUCT NO.	LENGTHS (#)
PB#CPAE	6', 8'



PB6NEW

Newport Bench

SPECIFICATIONS

- 6' or 8' length
- Cedar or gray 2" x 4" slats and 2" x 6" bullnosed slats
- Stainless steel hardware
- In-ground or surface mount frame

PRODUCT NO.	LENGTHS (#)
PB#NEW	6', 8'





PB6PARKPADA



PB6HEX



PBAPIC6

Park Place Standard & Accessible Portable Table

SPECIFICATIONS

- 6' or 8' length
- Cedar or gray 2" x 10" Resinwood slats
- Black recycled plastic contoured bases
- Stainless steel hardware
- Add ADA to end of product number (6' only)

PRODUCT NO.	LENGTHS (#)
PB#PARKP	6', 8'

Hex Standard & Accessible Portable Table

SPECIFICATIONS

- 6' length
- Cedar or gray Resinwood slats
- Black recycled plastic base
- Stainless steel hardware
- Includes umbrella hole
- Add ADA to end of product number

PRODUCT NO.	LENGTH
PB6HEX	6'

A-Frame Standard & Accessible Portable Table

SPECIFICATIONS

- 6' or 8' length
- Cedar or gray Resinwood slats
- Black recycled plastic base
- Stainless steel hardware
- Add ADA to end of product number (6' only)

PRODUCT NO.	LENGTHS (#)
PBAPIC#	6', 8'



Round Recycled Trash Receptacle

SPECIFICATIONS

- 32 gallon
 - Cedar or gray 1" x 4" Resinwood slats
 - Maintenance-free molded plastic rings
 - Includes heavy-duty zinc-coated hardware
 - Removable plastic top provides access to liner
 - Liner sold separately
- PRODUCT NO.: PB32R



Square Recycled Trash Receptacle

SPECIFICATIONS

- 32 gallon
 - Cedar or gray 1" x 4" Resinwood slats
 - Maintenance-free molded plastic rings
 - Includes heavy-duty zinc-coated hardware
 - Removable plastic top provides access to liner
 - Liner sold separately
- PRODUCT NO.: PB32S



Uptown
COLLECTION

a premium collection of modern benches, tables,
and trash receptacles

- 47 Zion & Rainier 48 Biscayne 49 Acadia 50 Bryce
51 Cascades 52 Gateway 53 Samoa & Arches

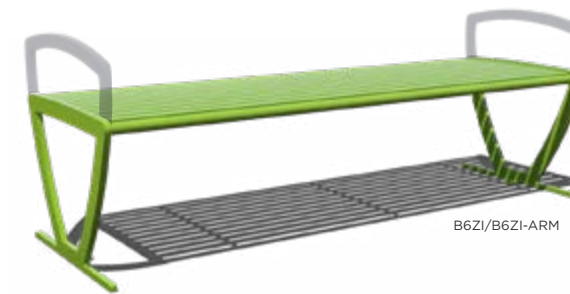


Zion Bench with Back

SPECIFICATIONS

- 6' length
- Powder coated finish
- Legs are made from 3/4" laser cut steel plate
- Fully welded
- Combined portable/surface mount frame

ARMRESTS	PRODUCT NO.
No Armrests	B6WBZI
Side Armrests	B6WBZI-ARM
Side and Center Armrests	B6WBZI-ARM-CENTER



Zion Bench without Back

SPECIFICATIONS

- 6' length
- Powder coated finish
- Legs are made from 3/4" laser cut steel plate
- Fully welded
- Combined portable/surface mount frame

ARMRESTS	PRODUCT NO.
No Armrests	B6ZI
Side Armrests	B6ZI-ARM

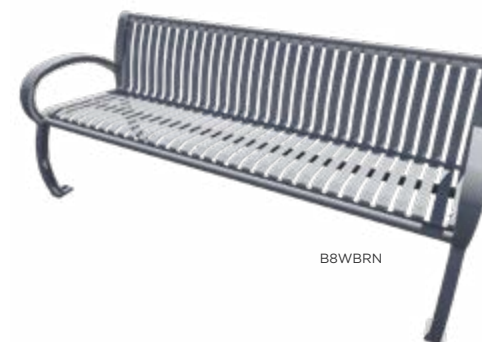


Zion Trash Receptacle

SPECIFICATIONS

- 36 gallon capacity
- Powder coated finish
- Features 1 1/2" x 1/4" flat steel strips
- Lid and liner included

LID STYLE	PRODUCT NO.
Flat Top	TR36ZI-FLATTOP
Ash Bonnet	TR36ZI-FLATTOPAB
Rain Bonnet	TR36ZI-FLATTOPRB



Rainier Bench with Back

SPECIFICATIONS

- 6' or 8' lengths available
 - Combined portable/surface mount frame with pre-drilled surface mount holes
 - Powder coated steel with cast aluminum frame
 - Fully welded
- PRODUCT NO.: B#WBRN





Biscayne Bench with Back

SPECIFICATIONS

- 4', 6', or 8' lengths available
- Features 1 1/2" square tubing
- Combined portable/surface mount frame
- Powder coated finish
- Ships fully assembled
- Fully welded

PRODUCT NO.: B#WBBC



Biscayne Bench without Back

SPECIFICATIONS

- 4', 6', or 8' lengths available
- Features 1 1/2" square tubing
- Combined portable/surface mount frame
- Powder coated finish
- Ships fully assembled
- Fully welded

PRODUCT NO.: B#BC



Biscayne Patio Table and Chair Set

SPECIFICATIONS

- Includes one solid top pedestal table and four portable chairs
- Powder coated finish
- Chairs feature both 1 1/2" and 1" square tubing
- Pre-drilled surface mount holes

PRODUCT NO.: TS36BC-CBC-SET



Biscayne Geometric Bench with Back

SPECIFICATIONS

- 8' length
- Features 4" square tubing supports
- Add SM (surface mount) or S (in-ground mount) to end of product number
- Powder coated finish

PRODUCT NO.: B8WBBCGSM



Biscayne Geometric Bench without Back

SPECIFICATIONS

- 8' length
- Features 4" square tubing supports
- Add SM (surface mount) or S (in-ground mount) to end of product number
- Powder coated finish

PRODUCT NO.: B8BCGS



Biscayne Trash Receptacle

SPECIFICATIONS

- 32 gallon capacity
- Powder coated finish
- Optional second powder coated backing color
- 1" square tubing
- Lid and liner are included
- Portable with mounting kit sold separately

LID STYLE	PRODUCT NO.
Flat Top	TR32BC-FLATTOP
Ash Bonnet	TR32BC-FLATTOPAB
Rain Bonnet	TR32BC-FLATTOPRB



Acadia Portable Table

SPECIFICATIONS

- Powder coated frame, table top, and seats
- Pre-drilled surface mount holes
- 36" solid top
- Features standard umbrella hole

PRODUCT NO.: TS36AC



Acadia Bench with Back

SPECIFICATIONS

- 4' or 6' lengths available
- Powder coated finish
- Heavy-duty 2 3/8" powder coated frame
- Fully welded
- Add SM (surface mount) or S (in-ground mount) to end of product number

PRODUCT NO.: B#WBAC



B6AC

Acadia Bench without Back

SPECIFICATIONS

- 4' or 6' lengths available
 - Powder coated finish
 - Heavy-duty 2 3/8" powder coated frame
 - Fully welded
 - Add SM (surface mount) or S (in-ground mount) to end of product number
- PRODUCT NO.: B#AC



B6WBBY-ST

Bryce Steel Bench with Back

SPECIFICATIONS

- 4', 6', or 8' lengths available
 - Features 1/4" x 5" powder coated steel planking
 - Features 3/4" powder coated steel plate legs reinforced with 1/4" thick support bars
 - Combined portable/surface mount frame with tabs
- PRODUCT NO.: B#WBBY-ST

Bryce Steel Bench without Back

SPECIFICATIONS

- Features 1/4" x 5" powder coated steel planking
- Features 3/4" powder coated steel plate legs reinforced with 1/4" thick support bars
- Combined portable/surface mount frame with tabs
- Available with or without armrests

ARMRESTS	LENGTH (#)	PRODUCT NO.
No Armrests	4', 6', 8'	B#BY-ST
Side Armrests	4', 6', 8'	B#BY-ST-ARM



B6BY-ST/B6BY-ST-ARM



B6WBBY-IP

Bryce Ipe Bench with Back

SPECIFICATIONS

- 4', 6', or 8' lengths available
 - Features 1 1/4" x 6", stained Ipe wood planking
 - Planks and are cut to length and predrilled
 - Planks are sealed on each end to prevent splitting
 - Features 3/4" powder coated steel plate legs reinforced with 1/4" thick support bars
 - Combined portable/surface mount frame with tabs
- PRODUCT NO.: B#WBBY-IP



B6BY-IP-ARM



B6BY-IP

Bryce Ipe Bench without Back

SPECIFICATIONS

- Features 1 1/4" x 6", stained Ipe wood planking
- Planks and are cut to length and predrilled
- Planks are sealed on each end to prevent splitting
- Features 3/4" powder coated steel plate legs reinforced with 1/4" thick support bars
- Combined portable/surface mount frame with tabs
- Available with or without armrests

ARMRESTS	LENGTH	PRODUCT NO.
No Armrests	4', 6', 8'	B#BY-IP
Side Armrests	4', 6', 8'	B#BY-IP-ARM



B6WBCC-RC

Cascades Bench with Back

SPECIFICATIONS

- 6' or 8' lengths available
 - Recycled planking in your choice of four colors
 - 1 1/2" thick cast aluminum frame with textured polyethylene finish
 - Stainless steel hardware
 - Combined portable/surface mount frame
- PRODUCT NO.: B#WBCC-RC



B6CC-RC

Cascades Bench without Back

SPECIFICATIONS

- 6' or 8' lengths available
 - Recycled planking in your choice of four colors
 - 1 1/2" thick cast aluminum frame with textured polyethylene finish
 - Stainless steel hardware
 - Combined portable/surface mount frame
- PRODUCT NO.: B#CC-RC

Cascades Trash Receptacle

SPECIFICATIONS

- 32 gallon capacity
- 2" x 4" recycled plastic planks in your choice of four colors
- Lid and liner are included
- Portable with mounting kit sold separately

LID STYLE	PRODUCT NO.
Flat Top	TR32CC-FLATTOP
Ash Bonnet	TR32CC-FLATTOPAB
Rain Bonnet	TR32CC-FLATTOPRB



TR32CC-FLATTOPRB



B6GW-RC

Gateway Recycled Bench without Back

SPECIFICATIONS

- 4' or 6' lengths available
 - 2" x 4" recycled planking in your choice of four colors
 - Powder coated cast aluminum frame
 - Combined portable/surface mount frame
 - Available in 4' and 6' lengths
- PRODUCT NO.: B#GW-RC



B6WBSA

Samoa Bench with Back

SPECIFICATIONS

- 6' length
 - 2" x 2" square tube frame
 - Combined portable/surface mount frame with pre-drilled surface mount holes
 - Powder coated steel
- PRODUCT NO.: B6WBSA



B6WBAR5-ST

Arches Steel Bench with Back

SPECIFICATIONS

- 6' length
 - Powder coated 3" square tubing legs and steel slats
 - Replace # in product number with SM (surface) or S (in-ground mount)
- PRODUCT NO.: B6WBAR#-ST



B6ARSM-ST

Arches Steel Bench without Back

SPECIFICATIONS

- 6' length
 - Powder coated 3" square tubing legs and steel slats
 - Replace # in product number with SM (surface) or S (in-ground mount)
- PRODUCT NO.: B6AR#-ST



B6ARSM-ST-CANT

Arches Steel Cantilever Bench

SPECIFICATIONS

- 6' length
 - T-cantilever design
 - Features powder coated 4" steel tubing frame and steel slats
 - Add SM (surface) or S (in-ground mount) after "AR" in product number
- PRODUCT NO.: B6AR#-ST-CANT

Gateway Steel Bench with Back

SPECIFICATIONS

- Powder coated finish
- Cast aluminum frame with metal slats
- Available in horizontal or vertical metal slats
- Combined portable/surface mount frame

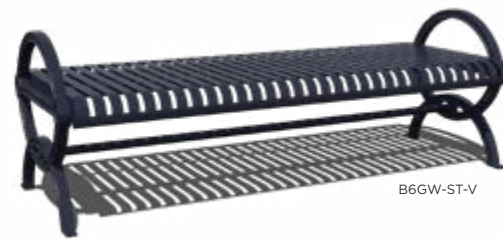
SLAT DESIGN	PRODUCT NO.	LENGTH (#)
Horizontal	B#WBGW-ST-H	4', 6'
Vertical	B#WBGW-ST-V	4', 6'



B6WBGW-ST-H



B6WBGW-ST-V



B6GW-ST-V

Gateway Steel Bench without Back

SPECIFICATIONS

- 4' or 6' lengths available
 - Powder coated finish
 - Cast aluminum frame with metal slats
 - Combined portable/surface mount frame
- PRODUCT NO.: B#GW-ST-V



B6WBGW-RC

Gateway Recycled Bench with Back

SPECIFICATIONS

- 4' or 6' lengths available
 - 2" x 4" recycled planking in your choice of four colors
 - Powder coated cast aluminum frame
 - Combined portable/surface mount frame
- PRODUCT NO.: B#WBGW-RC



B6WBARSM-RC

Arches Recycled Bench with Back

SPECIFICATIONS

- 6' length
- Powder coated 3" square tubing legs
- Recycled planking in your choice of four colors
- Replace # in product number with SM (surface) or S (in-ground mount)

PRODUCT NO.: B6WBAR#-RC



T6ARSM-RC-CANT

Arches Recycled Cantilever Table

SPECIFICATIONS

- Cantilever design
- 6' table with 4' bench seats
- Features 4" steel tubing powder coated frame
- Recycled planking in your choice of four colors
- Features metal accent tubes
- Replace # in product number with SM (surface) or S (in-ground mount)

PRODUCT NO.: T6AR#-RC-CANT



B6ARSM-RC

Arches Recycled Bench without Back

SPECIFICATIONS

- 6' length
- Powder coated 3" square tubing legs
- Recycled planking in your choice of four colors
- Replace # in product number with SM (surface) or S (in-ground mount)

PRODUCT NO.: B6AR#-RC



T6ARPEDSM-ST

Arches Steel Pedestal Table

SPECIFICATIONS

- 6' table with 6' bench seats
- Features powder coated 4" steel tubing frame and steel slats
- Replace # in product number with SM (surface) or S (in-ground mount)

PRODUCT NO.: T6ARPED#-ST



B4ARSM-RC-CANT

Arches Recycled Cantilever Bench

SPECIFICATIONS

- 4' length
- Cantilever design
- Features 4" steel tubing powder coated frame
- Features recycled planking and metal accent tubes
- Add SM (surface) or S (in-ground mount) after "AR" in product number

PRODUCT NO.: B4AR#-RC-CANT



T6ARPEDSM-RC

Arches Recycled Pedestal Table

SPECIFICATIONS

- 6' table with 6' bench seats
- Heavy-duty 2 3/8" powder coated frames
- 2" x 4" recycled planking in your choice of four colors
- Replace # in product number with SM (surface) or S (in-ground mount)

PRODUCT NO.: T6ARPED#-RC



T6AR#-ST-CANT

Arches Steel Cantilever Table

SPECIFICATIONS

- Cantilever design
- 6' table with 4' bench seats
- Features powder coated 4" steel tubing frame and steel slats
- Replace # in product number with SM (surface) or S (in-ground mount)

PRODUCT NO.: T6AR#-ST-CANT



TR32AR-FLATTOPAB

Arches Recycled Trash Receptacle

SPECIFICATIONS

- 32 gallon capacity
- 2" x 4" recycled plastic planks in your choice of four colors with metal accent tubes
- Lid and liner are included
- Portable with mounting kit sold separately

LID STYLE	PRODUCT NO.
Flat Top	TR32AR-FLATTOP
Ash Bonnet	TR32AR-FLATTOPAB
Rain Bonnet	TR32AR-FLATTOPRB



Aluminum Bleacher COLLECTION

high-quality aluminum bleachers for nearly every capacity



Low Rise Bleacher

SPECIFICATIONS

- 6" vertical rise per row and 24" tread depth between seats
- Row one seat is approximately 11 1/2" in height
- Capacity between 30 to 80 spectators based on selections
- Features 2" x 12" clear anodized seat planks
- Single foot planks

ROW AMOUNT	PRODUCT NO.	LENGTHS (#)
3	BL3XXLR	15', 21', 24'
4	BL4XXLR	15', 21', 24'
5	BL5XXLR	15', 21', 24'



Tip and Roll Bleacher

SPECIFICATIONS

- Tip and roll away for easy storage
- Feature swivel casters and non-marring rubber foot pads
- 6" vertical rise per row and 24" tread depth between seats
- Row one seat is approximately 16" in height
- Capacity between 10 to 48 spectators based on selections
- Features 2" x 10" clear anodized seat planks
- Choose between single or double 2" x 10" foot planks

ROW AMOUNT	PRODUCT NO.	LENGTHS (#)
3	BL3XXTNR	7' 6", 9', 12', 15', 21', 24'

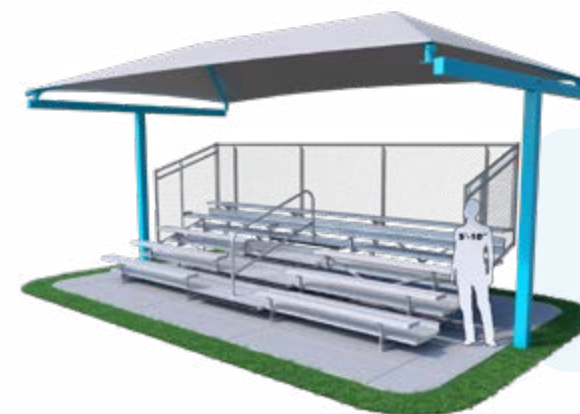


Non-Elevated Bleacher

SPECIFICATIONS

- 6" vertical rise per row on 3 row option and 8" on 5 row and above
- Row one seat is approximately 17" in height
- Capacity between 15 to 200 spectators based on selections
- Features 2" x 10" clear anodized seat planks
- Single foot planks

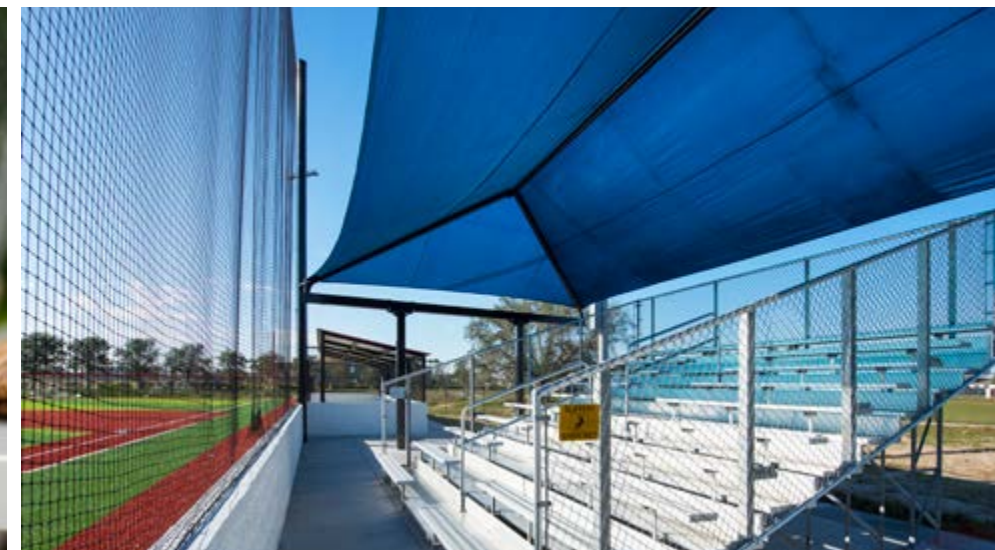
ROW AMOUNT	PRODUCT NO.	LENGTHS (XX)
3	BL3XXNE	7.5', 12', 15', 21', 24', 27'
5	BL5XXNE	15', 21', 24', 27', 30'
8	BL8XXNE	15', 21', 24', 27', 30'
10	BL10XXNE	15', 21', 24', 27', 30'



Offering Shades to Accommodate a Variety of Standard Bleacher Sizes

3, 4, 5, 10 Rows
7.5', 9', 15', 21', 27' Lengths

LEARN MORE AT SRPSHADE.COM





Dog Park
COLLECTION

a complete collection of dog park amenities

60 Benches **61** Trash Receptacles, Drinking Fountains, & Pet Stations
62 Agility Equipment & Packages



Fetching More Fun

Experience the joy of worry-free dog park ownership with our low-maintenance dog park equipment. Create a welcoming and enjoyable space for dogs and their owners that lasts, with minimal effort required.

All Your Dog Park Equipment in One Place



Furniture



Accessories



Agility Equipment

Why You'll Like Us



Natural Look, Virtually No Maintenance

Offers the look and feel of wood without the unwanted maintenance.



Certified Green by GreenCircle

Our support posts and decking material are certified green.



Easy to Clean & Maintain

Our dog park products clean easily with a light power wash.



Meets USGBC LEED Requirements

Our support posts and decking material meet criteria for LEED requirements.



B6WBULSM
With Backing
Plate

Standard Dog Park Bench

SPECIFICATIONS

- 6' bench
- 2 3/8" powder coated frame
- Add P (portable), SM (surface mount), or S (in-ground mount) to end of product number
- 12" seat width and 17" seat height

PRODUCT NO.: B6WBUL



B6WBCLASSIC

Classic Dog Park Bench

SPECIFICATIONS

- 6' bench
- Cast aluminum, powder coated frames
- Portable with pre-drilled holes for optional surface mounting
- Contoured back
- 16 1/2" seat height
- Classic wave design

PRODUCT NO.: B6WBCLASSIC



B6WBCLASSICWINGLINES
With Backing Plate

Classic Wingline Dog Park Bench

SPECIFICATIONS

- 6' bench
- Heavy-duty 2 3/8" powder coated frames
- Add P (portable), SM (surface mount), or S (in-ground mount) to end of product number
- Contoured back with armrests
- 18" seat height

PRODUCT NO.: B6WBCLASSICWINGLINE

Choose Paws or Bone Design



TR32 with DOME 32

Dog Park Trash Receptacle

SPECIFICATIONS

- 32 gallon
- Lid and liner sold separately
- Surface and in-ground mount options sold separately

METAL DESIGN	PRODUCT NO.
Regal	TR32
Perforated	TR32PERF
Classic	TR32CLASSIC



BSW-0007XX

BSW-0010XX

Dog Park Drinking Fountains

PET AND OWNER | BSW-0007XX

- Stainless steel
- Meets ADA requirements
- For both humans and pets

PET ONLY | BSW-0010XX

- Stainless steel
- Push-button mechanism
- Anti-rotation non-squirt bubbler



Leash Holder

PRODUCT NO.: RECF0022XX



Pet Wash Station

SPECIFICATIONS

- Stainless steel with green powder coat
- Resistant to sunlight, heat, and moisture
- Surface mount
- Hooks to external hose

PRODUCT NO.: BSW-0011XX



Pet Waste Station

SPECIFICATIONS

- Features "Pet Waste Station" sign
- Available in green or blue
- Includes sign, bag dispenser box with key, 2 rolls of bags, 10 gallon waste receptacle, 1 box of liner trash bags, mounting hardware, and mounting post

PRODUCT NO.: BSO-0003



Over and Under
Model: RECF0012XX



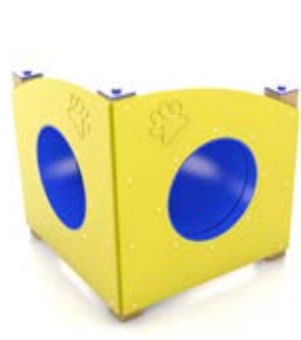
Through the Target
Model: RECF0006XX



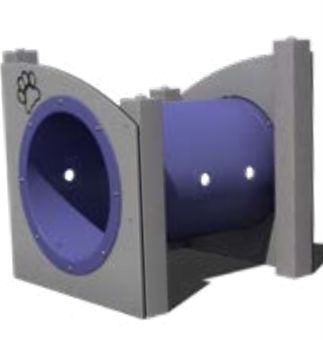
Jump Through
Model: RECF0014XX



High Jump
Model: RECF0011XX



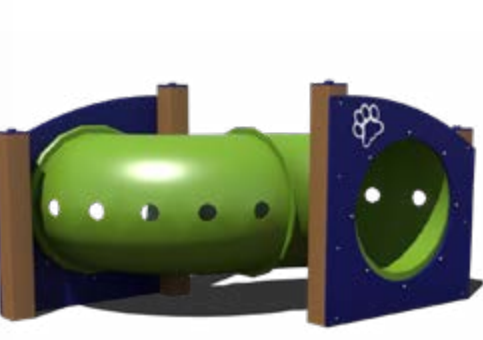
Nice Turn
Model: RECF0013XX



Dog Log
Model: RECF0008XX



Home Sweet Home
Model: RECF0010XX



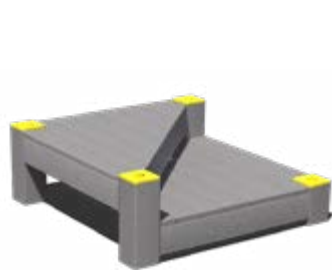
Through the Tunnel
Model: RECF0004XX



Limbone, Anyone?
Model: RECF0003XX



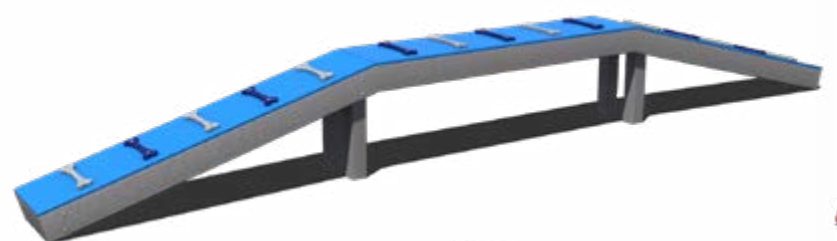
Let's Rest
Model: RECF0009XX



Climb and Sit
Model: RECF0002XX



Step Up
Model: RECF0005XX



Walk the Plank
Model: RECF0015XX



Camel Hump Climber
Model: RECF0001XX



Hurdle Jump Set
Model: RECF0007XX
Set of 4

Ask Your Representative to See Color Options

Puppy Paradise



FEATURES

- Beginner course
- Discounted package pricing
- 32' x 37' recommended area
- Package includes Jump Through, Stepping Up, Let's Rest, Camel Hump Climber, Home Sweet Home, and Nice Turn

Model: RECF0018XX



Pawsitively Playful



FEATURES

- Small area course
- Discounted package pricing
- 30' x 27' recommended area
- Package includes Jump Through, Stepping Up, Home Sweet Home, and Nice Turn

Model: RECF0019XX



Dog's Best Friend



FEATURES

- Intermediate course
- Discounted package pricing
- 28' x 33' recommended area
- Package includes Dog Log, Jump Through, Home Sweet Home, High Jump, Stepping Up, and Climb and Sit

Model: RECF0017XX



Beggin' For More



FEATURES

- Large area course
- 35' x 64' recommended area
- Package includes Camel Hump Climber, Through the Tunnel, Home Sweet Home, Dog Log, Jump Through, Let's Rest, Walk the Plank, High Jump, Stepping Up, and Over and Under

Model: RECF0020XX



Master Companion



FEATURES

- Advanced course
- Discounted package pricing
- 44' x 34' recommended area
- Package includes Through the Target, Dog Log, Walk the Plank, Limbone Anyone, Over and Under, and Home Sweet Home

Model: RECF0016XX



Best in Show



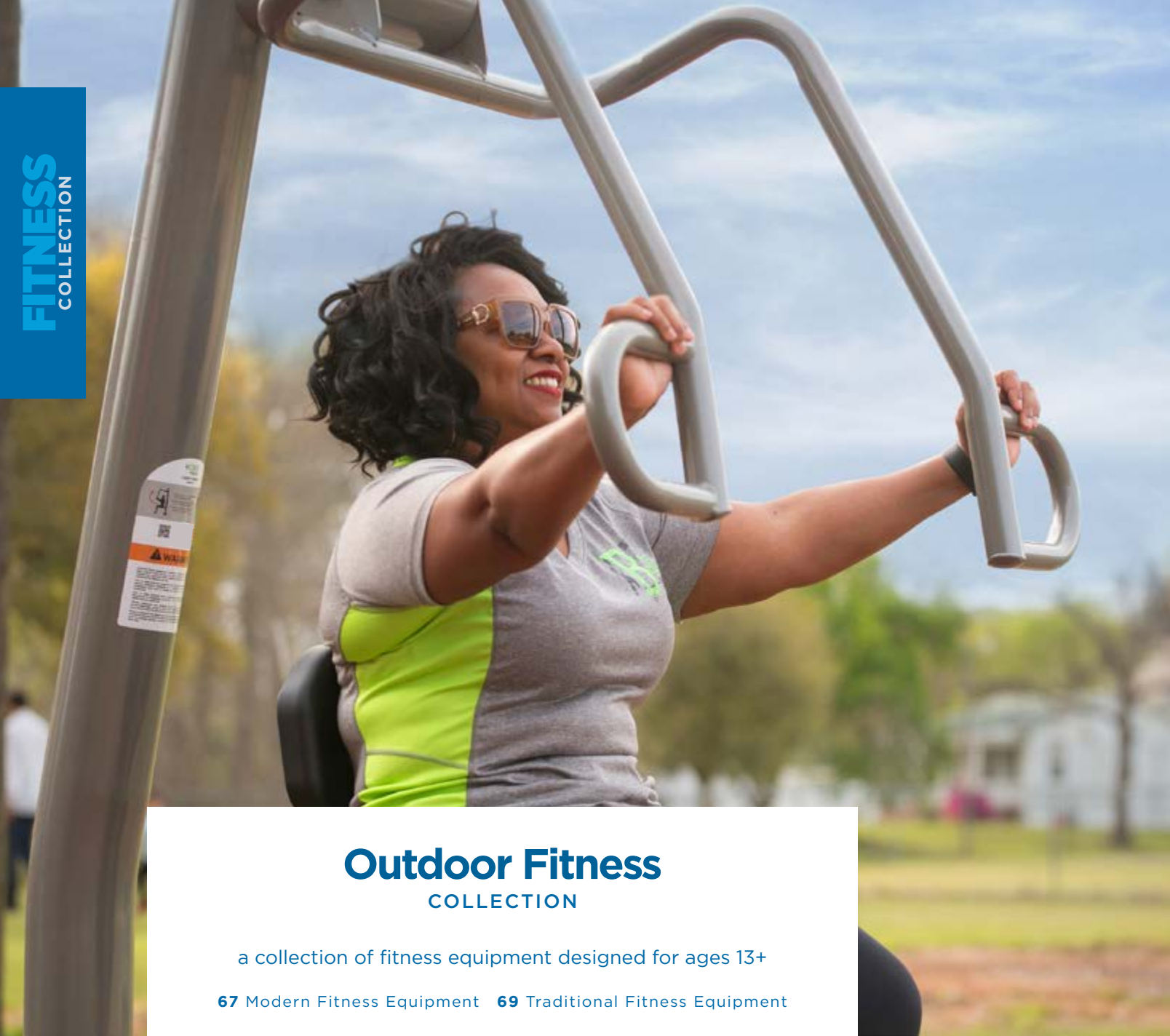
FEATURES

- Everything course
- 51' x 52' recommended area
- Package includes all dog play products except Hurdle Jump and Leash Holder

Model: RECF0021XX



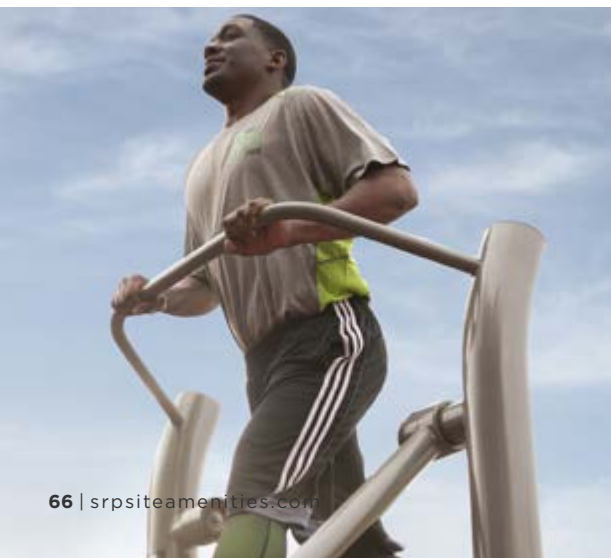
Ask Your
Representative to
See Color Options



Outdoor Fitness COLLECTION

a collection of fitness equipment designed for ages 13+

67 Modern Fitness Equipment 69 Traditional Fitness Equipment



Lat Pull Down

Instructional sticker included
In-Ground: UP165S
Surface Mount: UP165SM



Accessible Lat Pull Down

Instructional sticker included
In-Ground: UP180S
Surface Mount: UP180SM



Captain's Chair

Instructional sticker included
In-Ground: UP167S
Surface Mount: UP167SM



Leg Press

Instructional sticker included
In-Ground: UP170S
Surface: UP170SM



Cardio Walker

Instructional sticker included
In-Ground: UP164S
Surface Mount: UP164SM



Hand Cycle

Instructional sticker included
In-Ground: UP216S
Surface Mount: UP216SM



Accessible ADA Hand Cycle

Instructional sticker included
In-Ground: UP217S
Surface Mount: UP217SM



Chest Press

Instructional sticker included
In-Ground: UP166S
Surface: UP166SM



Accessible Chest Press

Instructional sticker included
In-Ground: UP179S
Surface: UP179SM



Sit-Up/Back Extension

Instructional sticker included
In-Ground: UP168S
Surface: UP168SM



Recumbent Cycle

Instructional sticker included
In-Ground: UP215S
Surface Mount: UP215SM



Balance Board Station

Instructional sign with post included
Model: UP177



Instructional Sign with Post & Instructional Sticker

Warning! Safety surfacing required for outdoor fitness equipment per ASTM F1292 and F3101-15.



Push-Up Station
Model: UP224
Instructional sticker included



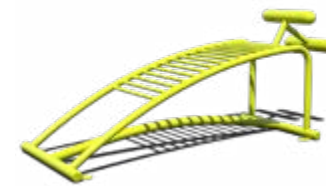
Horizontal Chin-Up Station
Model: UP183
Instructional sign with post included



Plyometric Box
Instructional sign included
Multiple heights available
6": UP172 12": UP173
18": UP174 24": UP175



Balance Plank Station
Model: UP176
Instructional sign with post included



Sit-Up Bench
Model: AFT13972XX
Add-On Instructional Sign
Model: 60019457XX
In-Ground Kit Required: FIT14050XX



Beam Jump
Model: 60019405XX
Add-On Instructional Sign
Model: 60019455XX



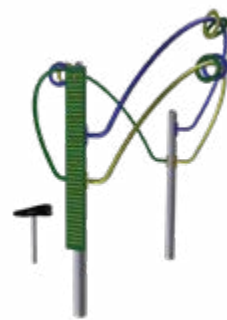
Stretching Post
Model: 60019404XX
Add-On Instructional Sign
Model: 60019454XX



Spring Up Bars
Model: 60019410XX
Add-On Instructional Sign
Model: 60019460XX



Assisted Balance Walk
Model: UP352
Instructional sign with post included



Skill Trainer
Model: UP354
Instructional sticker included



Assisted Step Around
Model: UP355
Instructional sticker included



Energy & Strength Wheels
Instructional sticker included
In-Ground: UP191S
Surface Mount: UP191SM



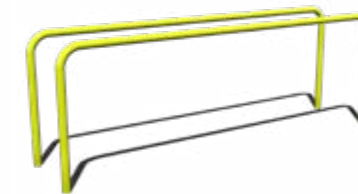
Jump Touch Beam
Model: 60019406XX
Add-On Instructional Sign
Model: 60019456XX



Pull Up & Chin Up Bar
Model: 60019403XX
Add-On Instructional Sign
Model: 60019453XX



Pull-Up & Dip Station
Model: AFT14031XX
Add-On Instructional Sign
Model: TFR0588XX
In-Ground Kit Required: FIT14050XX



Parallel Bars
Model: 60019401XX
Add-On Instructional Sign
Model: 60019451XX



Assisted Step Trainer
Model: UP353
Instructional sign with post included



Assisted Functional Trainer
Model: UP351
Instructional sign with post included



Balance Beam
Model: 60019408XX
Add-On Instructional Sign
Model: 60019458XX



Horizontal Ladder
Model: 60019409XX
Add-On Instructional Sign
Model: 60019459XX



Vertical Ladder
Model: 60019402XX
Add-On Instructional Sign
Model: 60019452XX

10 Station Course (Not Pictured)

Model: 60019400XX

Includes:

- Vertical Ladder
- Beam Jump
- Stretching Post
- Pull Up and Chin Up Bars
- Jump Touch Beam
- Parallel Bars
- Sit-Up Bench
- Spring Up Bars
- Horizontal Ladder
- Balance Beam
- 3 Large Instructional Signs



Instructional Sign with Post & Instructional Sticker

Warning! Safety surfacing required for outdoor fitness equipment per ASTM F1292 and F3101-15.

Color Options

Essentials Amenities | Textured Polyethylene



Basic Amenities | Thermoplastic

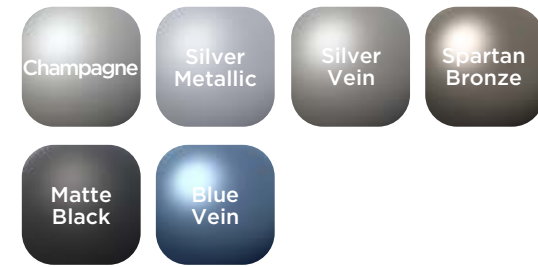


Powder Coat

Gloss



Matte, Textured, or Metallic



Recycled Uptown Amenities | Recycled Planks



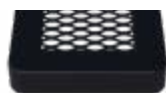
Recycled Collection | Resinwood Slats



Metal Style Options

Essential Amenities

Regal | RC
3/4" #9 expanded metal inside a 2" x 2" iron frame



Perforated | PERF
5/8" diameter punched steel with rolled corners



Innovated | INNV
5/8" diameter punched steel with round corners



Rolled | ROLL
3/4" #9 expanded metal with rolled edges



Classic | CLASS
3/4" #9 expanded metal inside ribbed steel with rolled edges



Basic Amenities

UltraLeisure® | UL
3/4" #9 expanded metal inside a 1" x 1 7/8" metal strap frame



Mounting Options



Warranty

Superior Recreational Products (SRP) warrants that its product will be free from defects in materials and workmanship as well as maintain structural integrity for the periods listed below from the date of invoice and once SRP has been paid in full. This warranty is in effect only if the product has been assembled and installed strictly in accordance with the setup instructions provided by SRP, good construction practices, and has been subjected only to normal use and exposure.

- Lifetime* Warranty on Stainless Steel Hardware
- 7-Year Limited Warranty on Textured Polyethylene and Thermoplastic
- 5-Year Limited Warranty on Frames and Powder Coat
- 1-Year Limited warranty on moving parts and materials not covered above

The Limited Warranty excludes abnormal conditions, contingent liability, cosmetic defects such as scratches, dents, marring, stripping, peeling, or fading; damage due to incorrect installation, vandalism, misuse, accident wear and tear from normal use; exposure to extreme weather, immersion in salt or chlorine water, damage due to sand, salt spray, or other abrasive and corrosive material; unauthorized repair or modification, abnormal use, or lack of maintenance. The warranty does not cover damages due to "acts of God" such as hail, flooding, lightning, tornadoes, sand storms, shifts of terrain, earthquakes, mud slides, and windstorms. SRP does not warrant product for defects caused by erection, harsh site conditions, lack of maintenance, and/or other conditions beyond SRP's control. SRP will not be held responsible for any materials that were not properly stored prior to installation. SRP reserves the right to void the limited warranty if it not installed per the installation instructions and/or unauthorized modifications.

In the unlikely event of failure, SRP reserves the right to alter the design, color, or contributing factors to rectify the condition and help prevent any future reoccurrence(s). SRP has the option to repair or replace any defect in materials.

The warranty is void if any changes, modifications, additions, or attachments are made to the product without the written consent of the manufacturer.

SRP excludes any implied warranty of merchantability, fitness, or purpose, and there are no warranties which extend beyond the description of the face hereof. Under no circumstances will SRP be responsible for any indirect, special, consequential, incidental, or liquidated damages due to breach of warranty and such damages are specifically excluded from the warranty.

The owner shall notify SRP with original Sales Order Number issued from SRP to arrange for an inspection within 30 days after discovery of any defect under this warranty and before any alteration or repair is made or attempted. This Limited Warranty shall be null and void if the owner makes any alterations in design.

This warranty is the only express warranty given by the company. No person has authority to change or add to these obligations and liabilities. The company reserves the right to determine whether the fault is caused by faulty workmanship, material, or the part that is defective.

*For the purpose of this warranty, lifetime encompasses no specific term of years, but rather that seller warrants to its original customer for as long as the original customer owns the product and uses the product for its intended purpose that the product and all parts will be free from defects in materials and manufacturing workmanship. This warranty does not cover damage caused by vandalism, misuse or abuse, altered or modified parts, or cosmetic damage such as scratches, dents, or fading or weathering and normal wear and tear. This warranty is valid only if the structures are installed in conformity with instructions provided by Superior Recreational Products using approved Superior Recreational Products parts. Superior Recreational Products will deliver the repaired or replacement part or parts to the site free of charge, but will not be responsible for labor or the labor costs of replacement. Warranty claims must be filed within the applicable warranty period and accompanied by a sales order or invoice number.



SRP will repair or replace at its discretion any defective part/s on an Ex-Works basis only. It is the responsibility of the customer to return the whole unit or the defective part/s at their own cost back to SRP for inspection along with proof of the date of purchase. SRP will not be liable for any costs incurred by the customer as a result of replacing the defective part/s, including but not limited to the costs of site visits and the labor costs involved with the removal and reinstallation of the whole unit or the defective part/s. Furthermore SRP will not be liable for any claimed compensation while the unit is not working or not present at the site whatsoever. This guarantee does not entitle the customer to a complete new product due to a defective component.

Structural Steel SRP offers a 5-year limited warranty on structural supports for tables and benches to the original purchaser to be free of rust outs that would compromise structural integrity. Workmanship is warranted for a period of five years. This steel warranty shall be void if damage to the steel is caused by the installer or from physical damage, damage by salt spray or sprinkler systems, contact with chemicals, chlorine, pollution, misuse, vandalism, or any act of God.

Powder Coat SRP offers a 5-year Limited Warranty for powder coating to the original purchaser. This Limited Warranty is for factory applied finish only. Damage occurring from shipping, erection, vandalism, accidents, or field modification is not covered in this limited warranty and will require field touch-up immediately and periodically thereafter. The owner must report any defect in powder coat at the time the installation is completed. Not covered by this Limited Warranty are acute angles, welds, and end plates.

The Limited Warranty for powder coating provides the following after a 5-year exposure period when applied according to the recommendations listed on the product's technical data sheet and appropriate surface preparation has been utilized.

- The coatings shall retain their original color with a ΔE of <7.5 units for high chroma colors (yellows, reds, oranges, etc.) and a ΔE of <5.0 units for low chroma colors, when tested in accordance with ASTM D 2244.
- The coating shall retain a minimum of 50% of its original gloss level after washing, when tested in accordance with ASTM D 523.
- The coating shall exhibit chalking no worse than numerical rating of 6, when evaluated in accordance with ASTM D 659-80.

Textured Polyethylene & Thermoplastic SRP offers a 7-year limited warranty to the original purchaser of the products to be free of corrosion on seats and tops that results in bare metal exposure after the date of purchase, excluding any corrosion that may be the result of vandalism or intentional stripping of any of the coating.

Pricing, Cancellation, and Shipping Policy All prices are F.O.B. factor and do not include freight, installation, shipping and handling, surfacing, or applicable taxes. All prices listed were current at the time of printing and in U.S. currency. Prices are subject to change without notice. To view our return policy, please visit superiorrecreationalproducts.com/returns. To view our shipping policy, please visit superiorrecreationalproducts.com/shipping-policy. For further information any further information please call 1.800.327.8774.

Superior[®]

RECREATIONAL PRODUCTS
A PLAYCORE Company

1050 Columbia Drive
Carrollton, GA 30117

866.343.2736

sales@siibrands.com



srpsiteamenities.com

